

Marion C Seltzer- Segment 8

Community Meeting 2
October 23, 2024



Today's Agenda- Oct. 23, 2024

Welcome Introduction of Project Team

Steering Committee Members

Project Background Current Status

Re-engaging with Community Project Timeline
Key Priorities for Engagement

Community Meeting 1 General Feedback
Remaining Clarifications

Seltzer Re-design Plan Site Plan
Tree Preservation Plan
Elevations

Alignment with Priorities Feedback

Next Steps and Closing Summary of next steps



Steering Committee Members

Community Members

Ms. Samaria Rice, Founder and CEO, The Tamir Rice Foundation

Mr. Hiawatha Powell, The Tamir Rice Foundation

Nikki Hudson, Friends of Cudell Park/Commons

Brent Eysenbach , Friends of Cudell Park/Commons

Cleveland Metropolitan School District

Lisa Farmer, Chief External Affairs Officer

Karen Thompson, Chief District Operations Officer

Leo Serrano, Institutional Advancement

Candice Grose, Communications Officer

Marion C. Seltzer School Community

Parent Member- Candice Mann

Faculty Member- Lindsay Rados, Grades 7/8 ELA

Union Chapter Chair- Elisa Kazek, Art Teacher

Principal Member- Caitlin Kilbane

City of Cleveland

Jenny Spencer, Ward 15 Councilmember

Danny Kelly, Ward 11 Councilmember

Michele Pomerantz, Chief of Education

James DeRosa (Mark Duluk; Jim McKnight), Capital Projects

Segment 8 Team Designers

Hollie Dellisanti, CMSD Architect

Jeff Henderson, tda Architect

Community Facilitator/Project Manager

Aerionna Martin, CMSD, Innovation and Strategy

Overview of Roles and Responsibilities

Steering Committee

- Advisor and Liaison
- Provide guidance and insights on project plans
- Act as a bridge between the district and the community
- Ensure diverse perspectives are represented and considered

Cleveland Metropolitan School District

- Lead and coordinate project development and implementation
- Make final decisions based on the collective feedback from the steering committee and community
- Balance project goals with community needs and legal requirements

Community

- Engage in constructive dialogue and share diverse viewpoints
- Highlight community priorities, concerns and suggestions
- Support the steering committee by actively participating in outreach efforts



PROJECT BACKGROUND



Project Background: Current Status



Re-engaging in the Process Alongside the Community

- Enrollment has grown and is projected to be stable for the next 5 years
- This is a part of Segment 8
- Current Seltzer site is unique in its proximity to other CMSD schools and *without a school in this area of the city a potential void would exist.*
- Steering committee has been influential identifying priorities of stakeholders in the community
- Community meetings serve as an opportunity for additional feedback and discussion



Steering Committee Phases



Phase 1

- Committee established common priorities
- Built an identity as liaisons between district and community

Phase 2

- Built an understanding of barriers and opportunities
- Developed plans aligned with agreed-upon priorities

Phase 3

- Reviewed CMSD and City's proposed plans
- Offered helpful feedback on initial plan
- Provided feedback on additional engagement opportunities

RE-ENGAGING WITH THE COMMUNITY



Importance of Community Engagement



Community Ownership

- Community members will have a stronger sense of buy-in when their feedback is considered

Stronger Relationships

- Engagement activities strengthen the relationship between the district and the community

Enhance Project Quality

- Incorporating community knowledge and context helps create a solution that is more sustainable and effective
- Community has unique perspectives that helps CMSD identify potential issues early on



Engagement Thus Far

- 4 steering committee meetings
- City of Cleveland
- W 98th street homeowners
- Cleveland Fire Station 33
- Cuddell Recreation Center
- City of Cleveland Traffic Engineering
- Bond Accountability Commission
- Tamir Rice Foundation
- 2 Community Meetings

COMMUNITY MEETING 1





Rebuilt Trust and Accepted Feedback/Questions

- High turnout of staff, parents, and community members
- Positive reception of the plans and the opportunities to interact and engage
- Average satisfaction for school design was **4.6/5**
- Average satisfaction for the park design was **4.7/5**
- Several questions, expressed verbally and in feedback survey, on the removal of trees, plans for maximizing windows and the amenities for the park

Community Meeting 1: Feedback



Very happy with the design. Glad we could collaborate with the community.

Walking paths to tie the school, park, and “commons” together would be great!

Footprint seems nice and well thought out

Please be sure the learning garden is properly planned and resourced for success.

I feel that this is a waste of beautiful mature trees that cannot be replaced with saplings.

Please add benches along walking paths and around playgrounds.

Will the trees being taken down be replaced?

Very happy, but I wish the 40 trees could be saved.

I would like to see as many windows as possible to minimize the appearance of a brick wall.

Move building more south. You do not need 55 parking spaces when there are only 30-35 teachers and staff.

I appreciate the efforts made to minimize the impact on the community.

Community Meeting 1: Feedback



Very happy with the design. Glad we could collaborate with the community.

Footprint seems nice and well thought out

Walking paths to tie the school, park, and “commons” together would be great!

Please add benches along walking paths and around playgrounds.

Please be sure the learning garden is properly planned and resourced for success.

I appreciate the efforts made to minimize the impact on the community.

Community Feedback: Debunking



I feel that this is a waste of beautiful mature trees that cannot be replaced with saplings.

I would like to see as many windows as possible to minimize the appearance of a brick wall.

Move building more south. You do not need 55 parking spaces when there are only 30-35 teachers and staff.

Will the trees being taken down be replaced?

Very happy, but I wish the 40 trees could be saved.



I would like to see as many windows as possible to minimize the appearance of a brick wall.



I would like to see as many windows as possible to minimize the appearance of a brick wall.

- Every classroom will have windows
- The school design intentionally allows for students and staff to have a view of the surrounding park



Move building more south.
You do not need 55 parking
spaces when there are only
30-35 teachers and staff.



Move building more south.
You do not need 55 parking
spaces when there are only
30-35 teachers and staff.

- The school has 59 staff members, including staff members that are part-time
- The school needs ample parking space to account for staff *and visitors*
- Parking spots will be numbered to ensure each full-time staff member has a spot



I feel that this is a waste of beautiful mature trees that cannot be replaced with saplings.

Will the trees being taken down be replaced?

Very happy, but I wish the 40 trees could be saved.



I feel that this is a waste of beautiful mature trees that cannot be replaced with saplings.

Will the trees being taken down be replaced?

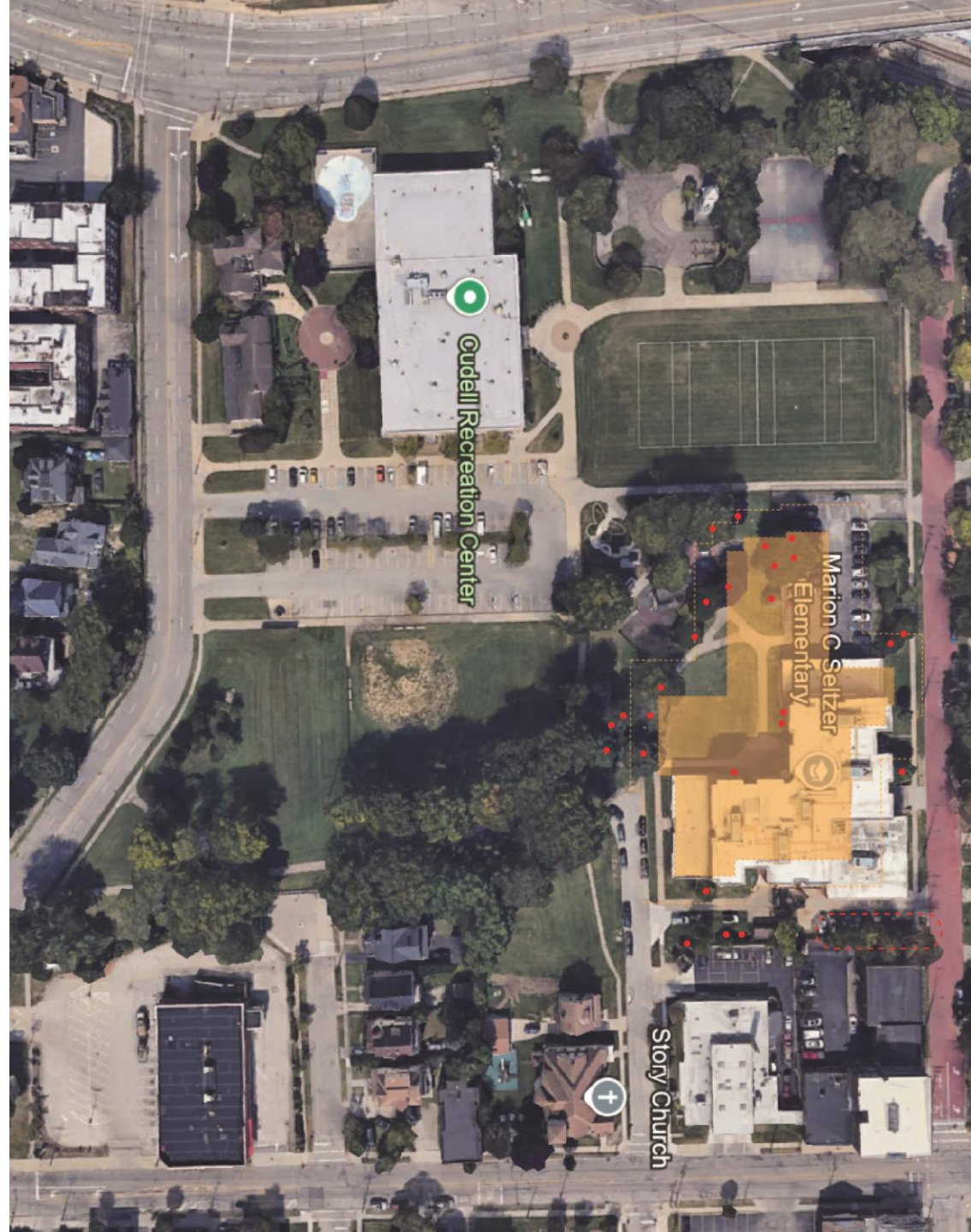
Very happy, but I wish the 40 trees could be saved.

- Most trees that will be impacted are not the mature trees referenced here
- An attempt will be made to plant trees around the building
- CMSD does not plant saplings due to their limited longevity
- 40 trees was a cautious estimate. We have updated data

I feel that this is a waste of beautiful mature trees that cannot be replaced with saplings.

Will the trees being taken down be replaced?

Very happy, but I wish the 40 trees could be saved.



**TREE PRESERVATION PLAN
10-23-2024**

REVIEW OF SITE PLAN



SITE DESIGN OBJECTIVES

1) PRESERVE GREEN SPACE

- ☐ a. NEW SCHOOL DEVELOPMENT TO STAY SOUTH OF THE EXISTING PLAYFIELD. NO IMPACT TO CLOCKTOWER, BALD CYPRESS AND ALL OTHER TREES AT THE NORTH END. TREES ON THE SOUTH END OF THE SITE ARE STILL IMPACTED.
- ☐ b. MINIMIZE THE FOOTPRINT OF THE SCHOOL ON THE SITE – 3 STORY BUILDING

2) INTEGRATE SCHOOL WITH PARK

- ☐ a. PLAYGROUNDS IN PARK SETTING – SEPARATED PK-K AND 1-8 PLAYGROUNDS.
- ☐ b. GREEN SPACE / LANDSCAPING AROUND SCHOOL
- ☐ c. SIDEWALKS AND PATHWAYS CONNECTING SCHOOL AND PARK ACTIVITIES.
- ☐ d. OUTDOOR LEARNING GARDEN
- ☐ e. ADA ACCESSIBILITY
- ☐ f. VISUAL CONNECTION FROM INSIDE SCHOOL TO PARK

3) CONNECTION TO NEIGHBORHOOD AND HISTORICAL MONUMENTS

- ☐ a. RESPECT THE TAMIR RICE MEMORIAL GARDEN BY MAXIMIZING THE SPACE BETWEEN THE MEMORIAL AND THE SCHOOL.
- ☐ b. RESPECT THE NEIGHBORS ON WEST 98TH BY MAXIMIZING THE SPACE BETWEEN THE STREET AND THE SCHOOL. NO BUILDING SERVICES ON WEST 98TH.
- ☐ c. EXTERIOR BUILDING DESIGN TO RELATE TO SURROUNDING URBAN FABRIC.

4) IMPROVE TRAFFIC FLOW AND PARKING

- ☐ a. SEPARATE BUS, PARENT AND PK TRAFFIC FLOW TO INCREASE SAFETY.
- ☐ b. SERVICE DELIVERY LOCATION
- ☐ c. CO-USE OF CUDELL PARKING
- ☐ d. UTILIZE WEST 99TH STREET FOR ACCESS.



CITY OF CLEVELAND
MAYOR'S OFFICE OF CAPITAL PROJECTS
REVISED CUDELL RECREATION CENTER III
PROPOSED SITE DEVELOPMENT

AUGUST, 2024



1" = 30'-0"



DRAFT

9-19-2024

BUILDING DESIGN OBJECTIVES

Multi-Lingual Curriculum – cultural connection to those communities

- 7 Spoken Languages in School
- Mapped Regions / Countries in the World
- Art and Craft of those Regions / Countries
 - Woven, tapestries, bright colors, bold geometries
 - Introduction of pattern and color into the design
 - Exterior
 - Interior

School-In-The-Park – material aesthetic, connection to nature

Open Space- site planning

- Placement of new school within the full campus of Cudell / CMSD
- Surround the building with open space - reinforce the idea of the school within the park. Looking through the park to the school.

Natural Surroundings

- Neutral colors of masonry –the colors of the earth
- Red color of West 98th street – Pavement surface – colored concrete in intentional areas – Main Entry

Existing Tree Canopy

- Inclusion of wood look – inspired by the mature tree canopy on site
- Integration of blue and green glass window – inspired by leaves and sky

Cudell Campus – connection to the Park and Community

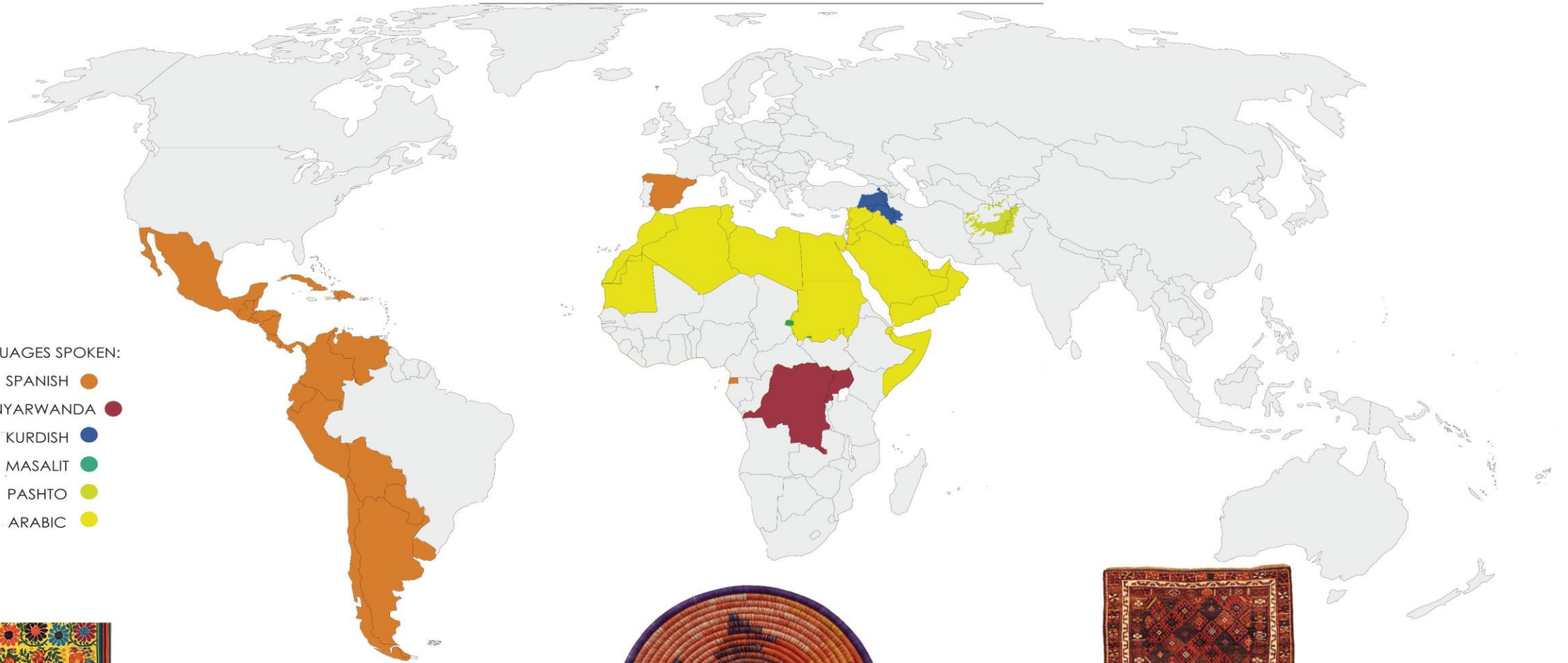
- Recreation Center – Mid-Century modern aesthetic
- Cudell Clocktower 1917 - Neo-Classic design
- Tamir Rice Memorial Garden – Butterfly Garden, Landscape
- Views to the School
- Views from the school

REFLECTING THE DIVERSE LANGUAGE CULTURES

LANGUAGES AND WOVEN ART AROUND THE WORLD

LANGUAGES SPOKEN:

- SPANISH ●
- KINYARWANDA ●
- KURDISH ●
- MASALIT ●
- PASHTO ●
- ARABIC ●



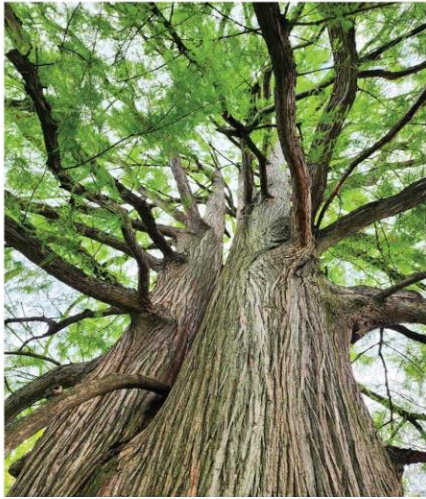
REFLECTING THE DIVERSE LANGUAGE CULTURES

LANGUAGES AND WOVEN ART AROUND THE WORLD



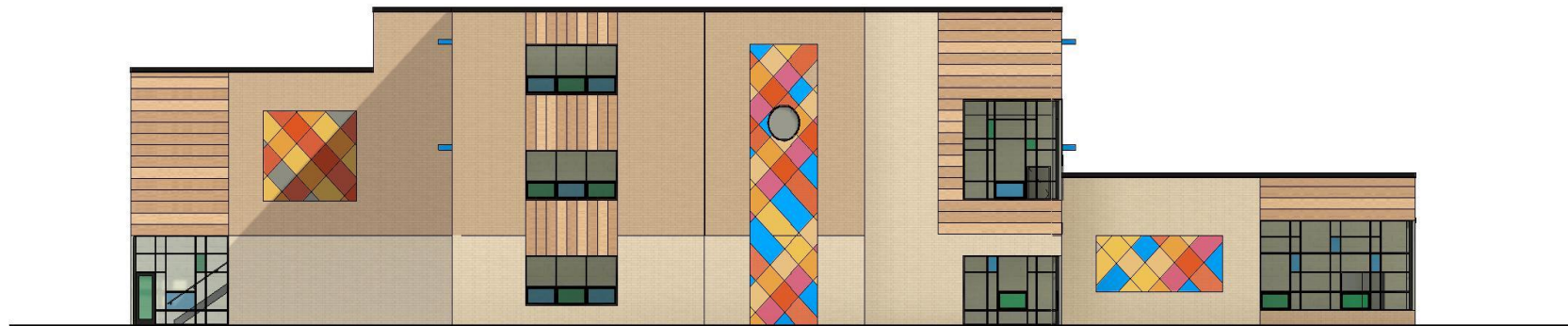
“SCHOOL IN THE PARK” AND BIOPHILIC DESIGN

THE CONNECTION BETWEEN NATURE AND MARION SELTZER





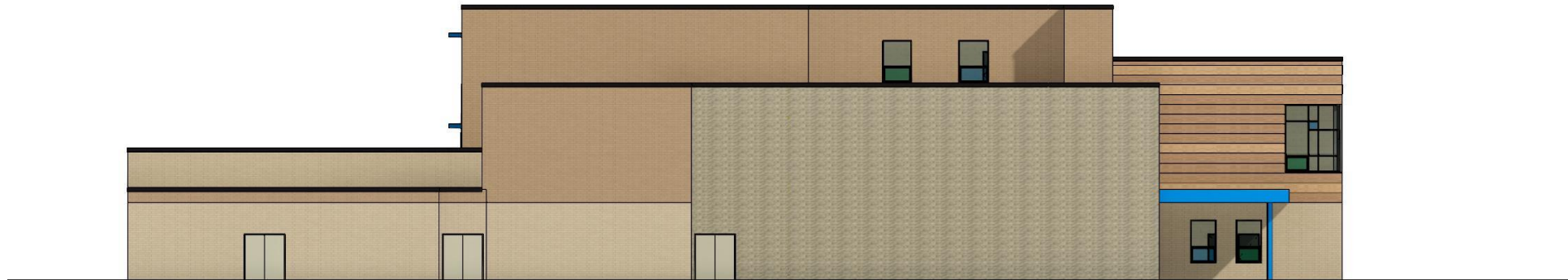
EAST ELEVATION



NORTH ELEVATION



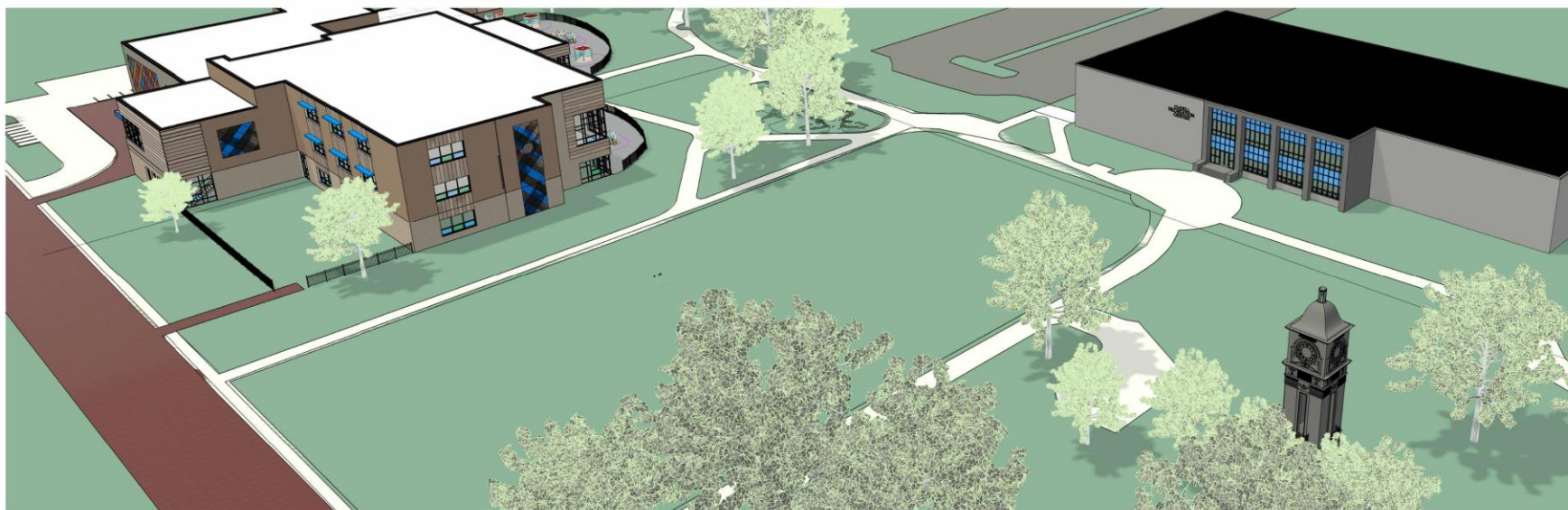
WEST ELEVATION



SOUTH ELEVATION



VIEWS FROM W98th



VIEWS FROM DETROIT AVE.



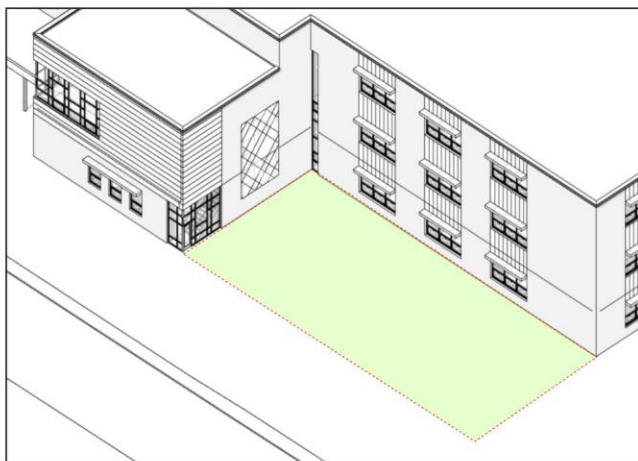
VIEWS FROM CUDELL CAMPUS

OUTDOOR LEARNING GARDEN - SHADOW STUDIES

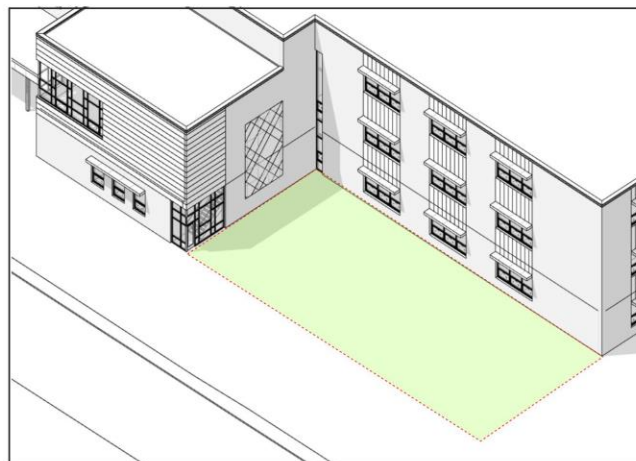
Please be sure the learning garden is properly planned and resourced for success.

JUNE

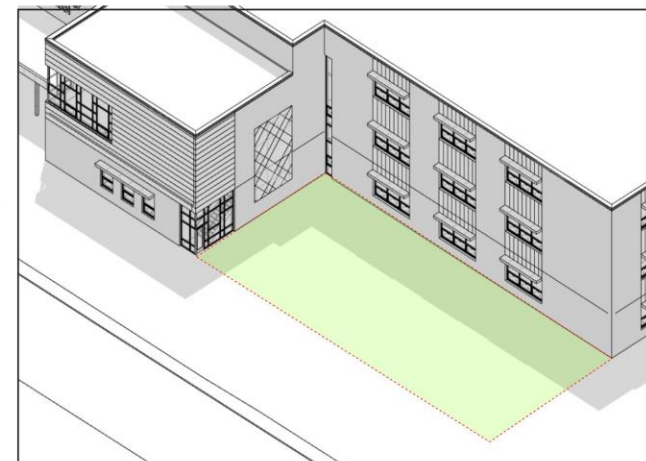
9AM



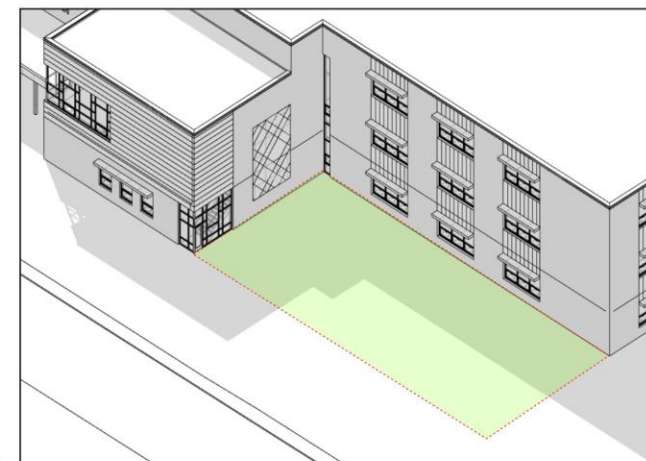
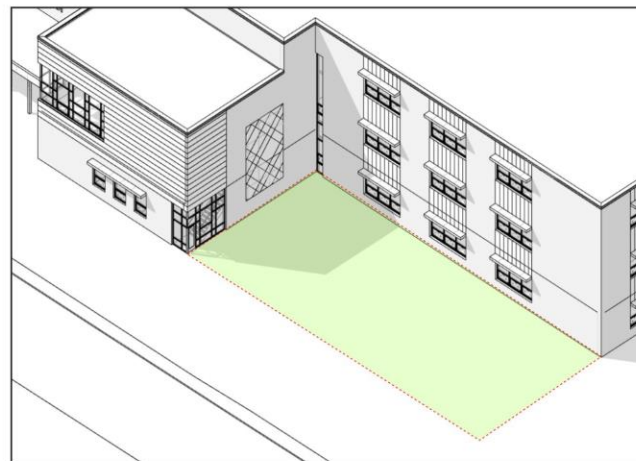
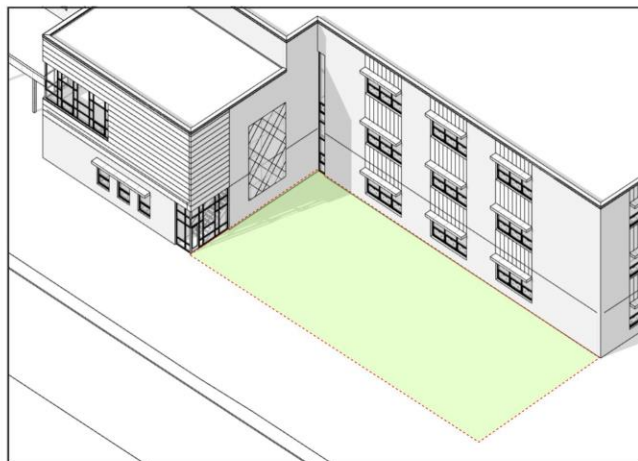
12PM



3PM



MAR - SEPT



City of Cleveland





CITY OF CLEVELAND
MAYOR'S OFFICE OF CAPITAL PROJECTS
REVISED CUDELL RECREATION CENTER
PROPOSED SITE DEVELOPMENT w/ FLOOR PLAN

SEPTEMBER, 2024



QUESTIONS



NEXT STEPS AND CLOSING



SITE DESIGN OBJECTIVES

1) PRESERVE GREEN SPACE

- ☐ a. NEW SCHOOL DEVELOPMENT TO STAY SOUTH OF THE EXISTING PLAYFIELD. NO IMPACT TO CLOCKTOWER, BALD CYPRESS AND ALL OTHER TREES AT THE NORTH END. TREES ON THE SOUTH END OF THE SITE ARE STILL IMPACTED.
- ☐ b. MINIMIZE THE FOOTPRINT OF THE SCHOOL ON THE SITE – 3 STORY BUILDING

2) INTEGRATE SCHOOL WITH PARK

- ☐ a. PLAYGROUNDS IN PARK SETTING – SEPARATED PK-K AND 1-8 PLAYGROUNDS.
- ☐ b. GREEN SPACE / LANDSCAPING AROUND SCHOOL
- ☐ c. SIDEWALKS AND PATHWAYS CONNECTING SCHOOL AND PARK ACTIVITIES.
- ☐ d. OUTDOOR LEARNING GARDEN
- ☐ e. ADA ACCESSIBILITY
- ☐ f. VISUAL CONNECTION FROM INSIDE SCHOOL TO PARK

3) CONNECTION TO NEIGHBORHOOD AND HISTORICAL MONUMENTS

- ☐ a. RESPECT THE TAMIR RICE MEMORIAL GARDEN BY MAXIMIZING THE SPACE BETWEEN THE MEMORIAL AND THE SCHOOL.
- ☐ b. RESPECT THE NEIGHBORS ON WEST 98TH BY MAXIMIZING THE SPACE BETWEEN THE STREET AND THE SCHOOL. NO BUILDING SERVICES ON WEST 98TH.
- ☐ c. EXTERIOR BUILDING DESIGN TO RELATE TO SURROUNDING URBAN FABRIC.

4) IMPROVE TRAFFIC FLOW AND PARKING

- ☐ a. SEPARATE BUS, PARENT AND PK TRAFFIC FLOW TO INCREASE SAFETY.
- ☐ b. SERVICE DELIVERY LOCATION
- ☐ c. CO-USE OF CUDELL PARKING
- ☐ d. UTILIZE WEST 99TH STREET FOR ACCESS.



Design Review Commission

- Approval required to move forward
- Preliminary meeting took place in September

Landmarks Commission

- Approval required to move forward
- Preliminary meeting took place in September

Swing and Demolition

- Swing logistics will be shared with the school community in early 2025
- Demolition will begin in summer-fall 2025

Thank you.

**Please submit any feedback on
the form or electronically using
the QR code.**

